

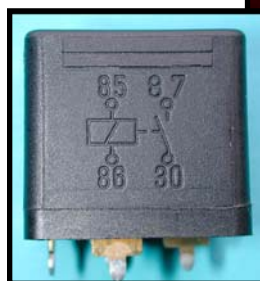
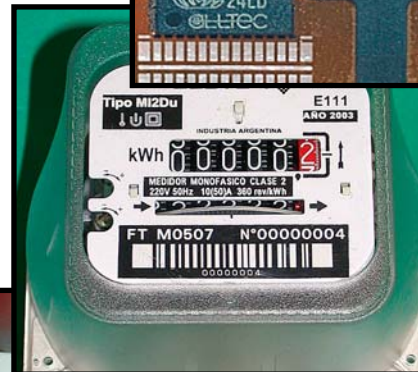
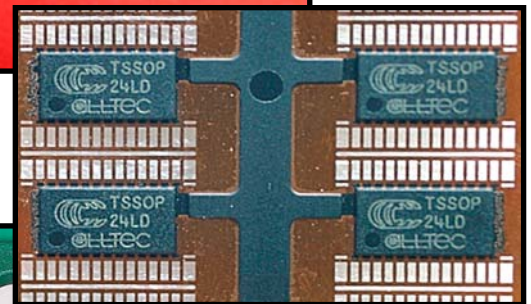
We Build Confidence... In High-Resolution Laser Coding

The ALLPRINT CS laser coding system delivers clean, permanent codes on a wide variety of materials. The ALLPRINT CS meets the highest demands for permanent, clean, reliable, flexible, and economic product marking.

With a small footprint and easy to position laser head, the ALLPRINT CS system provides simple integration for nearly any production environment. The ALLPRINT CS is ideal for printing text, numbers, logos, graphics and codes on a range of products including cartons, electronics and automotive goods.

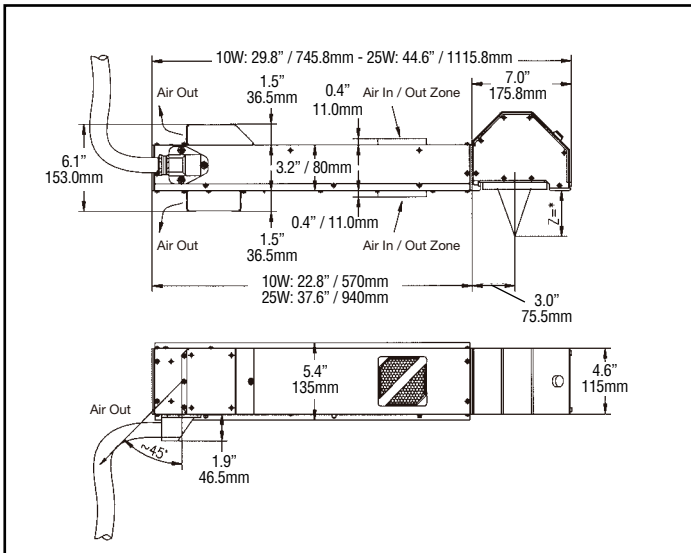
Our Smart Navigator hand controller and our Smart Job software allow a user-friendly, innovative graphical user interface for text, codes and graphics. ALLPRINT CS is the compact solution to your marking requirements.

- **Easy integration for flexible installs**
- **High end graphics, logos, codes**
- **Ethernet and up to 40 I/Os**
- **Superior character formation (vision readable)**
- **Large print window (multi lane print)**



Get confident. Contact us today.

Dimensions



Specifications

LASER

Laser Tube

- Single sealed CO₂ laser, 10 W and 25 W

Beam Deflection

- Steered beam

Focusing

- Precision lens system
- Focal length 100/200/300 mm, options

SOFTWARE

Smart Quick

- For system configuration and operation with *Smart Navigator* directly in the line
- Full diagnostic packaging for automatic system control and self-diagnostics

Smart Job

- Graphical user interface under Windows® for generation of layouts/working programs on external PCs
- Full feature text/data/graphics/parameter editor
- Optimized for electronic components marking
- Easy access to standard CAD and graphics programs by convenient import functions
- WYSIWYG

Language Capabilities

- Dutch, English, French, German, Italian, Spanish and options

CONTROLLER

Smart Navigator

- Hand-held remote control
- Data transport/transfer between ALLPRINT CS and external devices (PC, host computer, etc.)

Remote Communication

- RS232/422 interfaces
- Optional Ethernet interface for PC networks, CAN interface
- Bar code reader input
- Shaft encoder input
- Up to 40 input/output ports for product detectors, machine/user interlocks, alarm signals, remote start/stop, etc.

Printhead

- Dual head option

UTILITIES

Cooling System

- Air cooled

Environment

- Temperature range 40-105° F (5-40° C)
- Humidity 10%-90%, Non-condensing

Electrical Requirements

- 110/230 V, ~50/60 Hz, 1 PH, 0.35/0.70 kW (10 watt/25 watt version)

Dimensions

- Supply/control unit: D 17.4 x H 10.5 x W 17.6 inches (D 442 x H 266 x W 446 mm)

Weight

- 10 watt: 55 lbs. (25 kg)
- 25 watt: 78 lbs. (35 kg)

© 2004 Videojet Technologies Inc. - All rights reserved. Videojet Technologies Inc.'s policy is one of continued product improvement. We reserve the right to alter design and/or specifications without notice. Videojet and TotalSource are registered trademarks and ALLPRINT and ALLTEC are trademarks of Videojet Technologies Inc. Windows is a registered trademark of Microsoft Corporation. TrueType is a registered trademark of Apple Computer, Inc.

Videojet TotalSource® Service

The **TotalSource** program is the finest and most complete technical support system in the business. These services include everything from expert applications assistance, operator training and a full spectrum of maintenance services. The **TotalSource** program ensures total customer satisfaction. **Support when you need it**



MARKING FEATURES

Marking Speed

- Up to 1000 characters/sec. (application dependent)

Line Speed

- Up to 33 feet per second (0 - 10 m/s) (application dependent)

Marking Field

- Marking stationary products: from 1.6 x 1.2 to 8.2 x 5.8 inches² (40x30 to 205x145 mm²), depending on focus options
- On line marking: max height from 1.2 to 11.6 inches (30 to 290mm), depending on focus options

Marking Formats

- Standard industrial fonts (Type 1 Windows®, TrueType®)
- Machine readable codes (OCR, 2D-matrix, etc.)
- Bar codes: BC25, BC25I, BC39, BC39E, BC128, EAN128, EAN13, UPC_A, RSS14/RSS14 Truncated, RSS14 Stacked, RSS14 Stacked Omnidirectional, RSS Limited, RSS Expanded
- Graphics, logos, symbols, etc.
- Linear, circular, angular, reverse, rotate
- Sequential and batch numbering
- Automatic date, time, shift coding, real-time clock function



800-843-3610 • www.videojet.com • info@videojet.com

Videojet Technologies Inc. • 1500 Mittel Boulevard
Wood Dale IL • 60191-1073 • USA
Phone: 630-860-7300 • Fax: 630-616-3623

